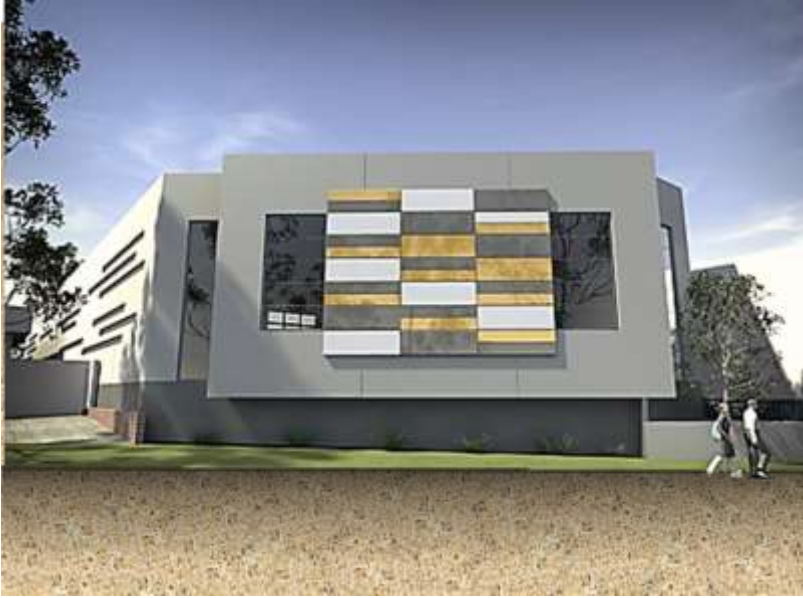


DECORATIVE PRODUCTS FOLIO

VIC MIX CONCRETE
161-171 ORDISH ROAD
DANDENONG SOUTH 3175
PH: 03 8792 3111
FAX: 03 8792 3199
www.vicmix.com.au



COMPUTER GENERATED IMAGE (indicative of the actual product only)



STONE CHARACTERISTICS OUTSIDE PHOTO RANGE MAY VARY

There are likely to be variations in consistency of colours and textures, appearance and quality in the finished product of the hardened concrete, as the raw ingredients are natural and subject to variations beyond our control. Whilst every effort has been made to match the colours in the preparation of this document, reproductive processes will alter the actual appearance in the concrete products to varying degrees.

The concrete samples shown are indicative only of the finished concrete product, and no guarantee of the colours or textures of the product is given or implied by this document.

PRODUCT NAME:

EMPEROR MARSH DELTA 555 IVORY 1/4 SANDSTONE

A triple blend of crushed brown granite, grey/cream pebbles and small traditional bluestone and set in an Ivory and quarter sandstone base.

Things you should know

Based on the Emperor Marsh Ivory, the base colour is intensified by the addition of Sandstone colouring pigment at quarter dosage strength. The result is a golden coloured base providing greater contrast for the white particles in the blend.

One of the key ingredients used in this product can at times be difficult to source. Availability is often restricted when demand exceeds the quarry's ability to supply. Please check with us before commencing your next project.

SPECIFICATION:

Vic Mix Emperor Marsh Delta
555 Ivory 1/4 Sandstone
25MPa Exposed Aggregate

Concrete
ORDER CODE:

W_EMPMD555QS

REVISION: 27/12/2015